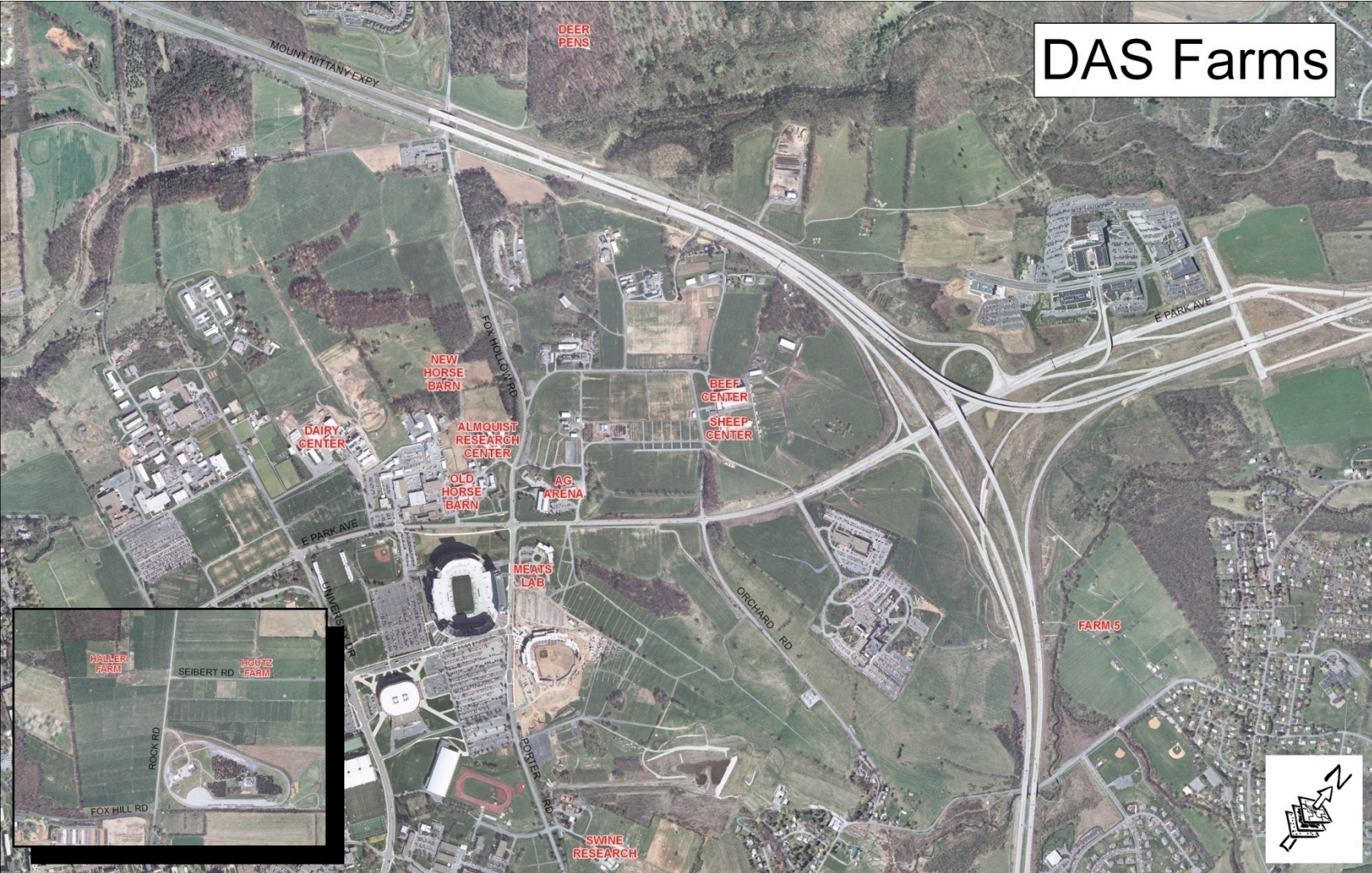


**Appendix B. Location of departmental farms (Haller and Houtz are located past the UPark Airport).**



Name	Rank	Graduate Degree Granting School	Expertise	FTE	FTE	FTE
				<i>Teaching</i>	<i>Research</i>	<i>Extension</i>
<b>Faculty</b>						
<b>Baumrucker, Craig</b>	Professor of Animal Nutrition and Physiology	Purdue University	Lactation Biology	20%	80%	
<b>Comerford, John</b>	Associate Professor of Dairy & Animal Science	University of Georgia	Beef Production		20%	80%
<b>Dechow, Chad</b>	Assistant Professor of Dairy Cattle Genetics	University of Tennessee	Dairy Genetics	60%	40%	
<b>Diaz, Francisco</b>	Assistant Professor of Reproductive Physiology	University of Wisconsin-Madison	Reproductive Physiology	25%	75%	
<b>Etherton, Terry</b>	Distinguished Professor of Animal Nutrition/Head	University of Minnesota	Animal Science	33%	33%	33%
<b>Hagen, Daniel</b>	Professor of Animal Science	University of Illinois	Reproductive Physiology	81%		19%
<b>Harpster, Harold</b>	Professor of Animal Science	Michigan State University	Nutrition/Beef Production	80%	10%	10%
<b>Harvatine, Kevin</b>	Assistant Professor of Nutritional Physiology	Cornell University	Nutritional Physiology	25%	75%	
<b>Heinrichs, Arlyn J.</b>	Professor of Dairy and Animal Science	Ohio State University	Dairy Nutrition		40%	60%
<b>Holden, Lisa</b>	Associate Professor of Dairy and Animal Science	The Pennsylvania State University	Dairy Production/Systems	20%	20%	60%
<b>Hristov, Alexander</b>	Associate Professor of Dairy Nutrition	Academy of Agricultural Sciences, Sofia, Bulgaria	Dairy Nutrition	25%	75%	
<b>Kephart, Kenneth</b>	Professor of Animal Science	The Pennsylvania State University	Swine Production	30%	10%	60%
<b>Kniffen, Daniel</b>	Assistant Professor of Dairy and Animal Science	West Virginia University	Beef Production/Repro	60%	10%	30%
<b>Liu, Wansheng</b>	Associate Professor of Genomics	Northwest Agricultural University, China	Genetics/Genomics	25%	75%	

<b>Tenure Track Faculty</b>				<b>Teaching</b>	<b>Research</b>	<b>Extension</b>
<b>Mills, Edward</b>	Associate Professor of Dairy and Animal Science	Purdue University	Meat Science	55%	45%	
<b>O'Connor, Michael</b>	Professor of Dairy Science	Virginia Polytechnic Institute	Reproductive Physiology			100%
<b>Oatley, Jon</b>	Assistant Professor of Reproductive Physiology	Washington State University	Reprod. Physiol/Stem Cell Biology	25%	75%	
<b>Ott, Troy</b>	Associate Professor of Reproductive Physiology	University of Florida	Reproductive Physiology	25%	75%	
<b>Pate, Joy</b>	Professor of Reproductive Physiology & the C. Lee Rumberger and Family Chair in Agricultural Sciences	University of New Hampshire	Reproductive Physiology	25%	75%	
<b>Raines, Christopher</b>	Assistant Professor of Meat Science and Technology	Kansas State University	Meat Science	75%	25%	
<b>Shashikant, Cooduvalli</b>	Associate Professor of Molecular and Developmental Biology	Centre for Cellular & Molecular Biology, Hyderabad, India	Molecular Biology	15%	85%	
<b>Staniar, W. Burton</b>	Assistant Professor of Equine Science	Virginia Tech	Equine Nutrition	75%	25%	
<b>Swinker, Ann</b>	Associate Professor of Animal Science	West Virginia University	Equine Prod/Management	20%		80%
<b>Varga, Gabriella</b>	University Distinguished Professor of Animal Science	University of Maryland	Dairy Nutrition	60%	30%	10%